

# Linear Glass Polarizer AUF MRC



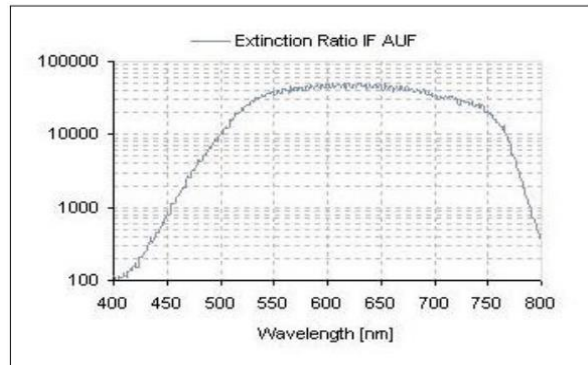
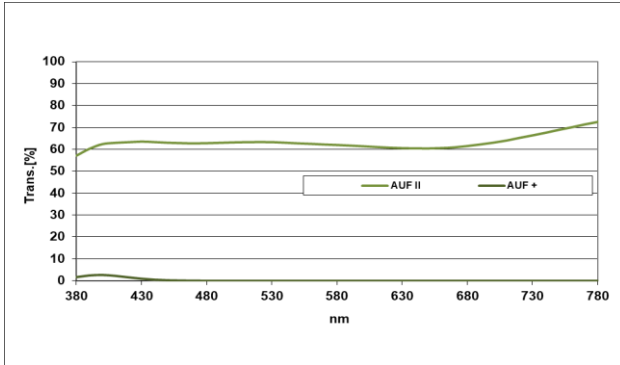
Schneider Kreuznach polarizers are designed to fulfill industrial requirements. They are made of dichroic laminated polarizing polymers cemented between 2 slides of protective glass. Additionally we offer polarizing film for larger sizes or customized shapes and flexible solutions. Polarizing films consists of long chain polymers, which are aligned by a stretching process to produce the polarization effect. The polarizing film is covered on both sides with cellulose triacetate (TAC) for protection and is therefore mechanically stable.



Key features	Applications
<ul style="list-style-type: none"><li>• Reduce reflections, increase contrast</li><li>• High extinction ratio</li><li>• Pre-cut custom shapes for polarizing films on request</li></ul>	<ul style="list-style-type: none"><li>• 3D applications</li><li>• Traffic surveillance/ITS</li><li>• Food &amp; beverage inspection</li><li>• Mechanical stress test</li><li>• LCD technology</li></ul>

Standard Products	
Name	Description
AUF	linear glass polarizer
<b>AUF MRC</b>	<b>linear glass polarizer with AR coating</b>
IFK P-W 64	linear polarizing film, contrast 40,000:1
IFK P-W 76	linear polarizing film, contrast 10,000:1

# Linear Glass Polarizer AUF MRC



Technical specifications	according to ISO 10110
Wavelength range	420 nm - 750 nm
Transmittance	$(T_p + T_s)/2 \geq 34\%$
Wavefront distortion	19-30 mm: 13/1 (0.40)   31-50 mm: 13/1 (0.50)   50-64 mm: 13/1 (0.60)
Coating	MRC
Temperature range	-20°C - +50°C
Glass thickness	2.7 +/- 0.25mm

Mounted Filter [IF] - rotatable and fixable			Mounted Filter [IF] - rotatable		
Mount	Thickness	ID	Diameter	Thickness	ID
SN2 25.5	2,7 mm	1053421	DH 25.5	2,7 mm	1019305
SN2 27.0	2,7 mm	1054935	DH 27.0	2,7 mm	1008192
SN2 30.5	2,7 mm	1010194	DH 30.5	2,7 mm	1076993
SN2 34.0	2,7 mm	1075140	DH 35.5	2,7 mm	1061081
SN2 35.5	2,7 mm	1059333	DH 37.0	2,7 mm	1017231
SN2 37.0	2,7 mm	1010311	DH 40.5	2,7 mm	1090589
SN2 40.5	2,7 mm	1063384	DH 43.0	2,7 mm	1075424
SN2 43.0	2,7 mm	1075281	DH 46.0	2,7 mm	1008191
SN2 46.0	2,7 mm	1054936	DH 49.0	2,7 mm	1007672
SN2 49.0	2,7 mm	1068232	DH 52.0	2,7 mm	1005685
			DH 55.0	2,7 mm	1013281
			DH 58.0	2,7 mm	1009449
			DH 62.0	2,7 mm	1009102
			DH 67.0	2,7 mm	1078764

Unmounted Filterglass [IFG]					
Mount	Thickness	ID	Mount	Thickness	ID
23.0 mm	2,7 mm	ID to be defined	33.0 mm	2,7 mm	1090603
24.0 mm	2,7 mm	ID to be defined	34.0 mm	2,7 mm	ID to be defined
29.0 mm	2,7 mm	1090602			

Order Nomenclature	
Mounted Filter [IF]	Unmountd Filterglass [IFG]
IF AUF MRC [Mount] [Thickness]	IFG AUF MRC [Diameter] [Thickness]
Example: IF AUF MRC SN2 25.5 2.7	Example: IFG AUF MRC 23.0 2.7

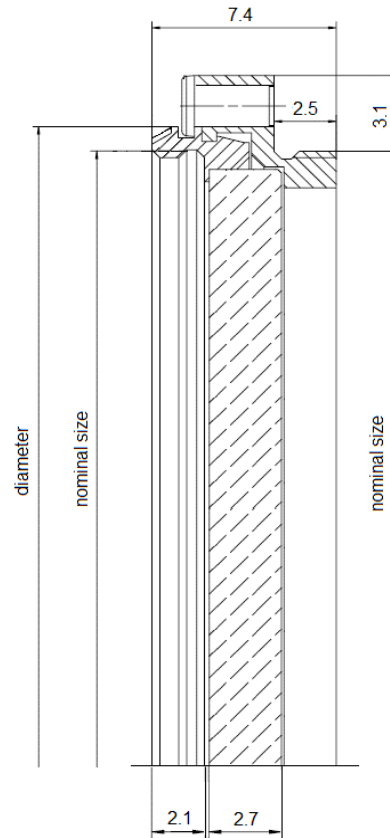
## SN2-Mount

The SN2-Mount is designed for polarizers and achieves highest possible aperture, avoiding vignetting in machine vision systems. Its unique locking mechanism fixes the correct orientation, even in typical industrial environment. The filters are glued into the mount to secure them against vibrations when integrated into robots or production lines. It is ideal to be used in automated fabrication. SN2-Mounts have a female and male M-thread, and can be stacked if several filters must be combined.

Key features	Applications
--------------	--------------

- |   |   |
|---|---|
| <ul style="list-style-type: none"> <li>• Rotatable</li> <li>• Large clear aperture</li> <li>• No vignetting</li> <li>• Stackable</li> <li>• Robust</li> <li>• Black anodized brass</li> </ul> | <ul style="list-style-type: none"> <li>• Mounted on lenses</li> <li>• Mounted on measurement instruments</li> </ul> |
|---|---|

Thread	Diameter	Clear Aperture	Thickness
M 25.5x0.5	27 mm	22.7 mm	7.4 mm
M 27.0x0.5	28.5 mm	23.7 mm	7.4 mm
M 30.5x0.5	32 mm	26.7 mm	7.4 mm
M 35.5 x0.5	37 mm	31.7 mm	7.4 mm
M 37.0x0.75	38.5 mm	32.7 mm	7.4 mm
M 40.5x0.5	42 mm	36.7 mm	7.4 mm
M 43.0x0.75	44.5 mm	37.7 mm	7.4 mm
M 46.0x0.75	47.5 mm	41.7 mm	7.4 mm
M 49.0x0.75	50.5 mm	44.7 mm	7.4 mm



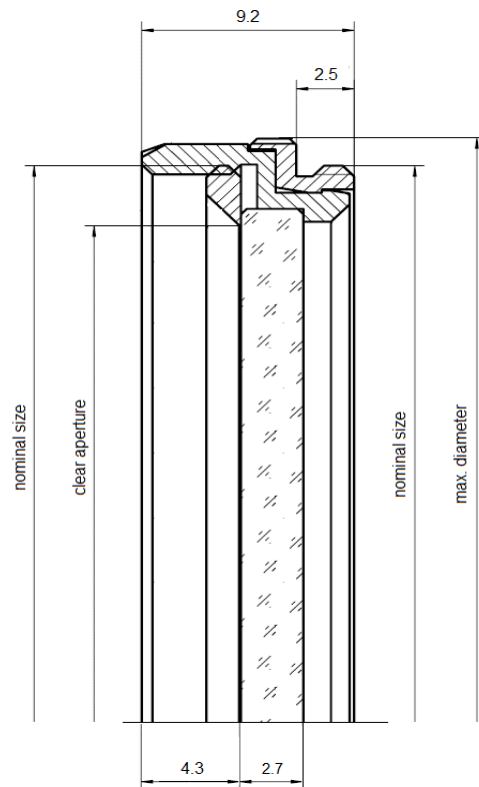
## DH-Mount

Schneider-Kreuznach offers a variety of mounts for polarizers with common thread sizes to fit on most camera lens systems. The DH-Mount is rotatable to adjust polarization axis in the required orientation. The filter glass is held by a retainer ring. All DH-Mounts have a female and male M-thread and can be stacked if several filters must be combined.

Key features	Applications
--------------	--------------

- |  |   |
|--|---|
| <ul style="list-style-type: none"> <li>• Rotatable</li> <li>• Stackable</li> <li>• Black anodized brass</li> </ul> | <ul style="list-style-type: none"> <li>• Mounted on lenses</li> <li>• Mounted on measurement instruments</li> </ul> |
|--|---|

Thread	Diameter	Clear Aperture	Thickness
M 25.5x0.5	27 mm	20.8 mm	9.2 mm
M 27.0x0.5	28.5 mm	21.8 mm	9.2 mm
M 30.5x0.5	32 mm	25.8 mm	9.2 mm
M 35.5 x0.5	37 mm	30.8 mm	9.2 mm
M 37.0x0.75	38.5 mm	31.8 mm	9.2 mm
M 40.5x0.5	42 mm	35.8 mm	9.2 mm
M 43.0x0.75	44.5 mm	37.8 mm	9.2 mm
M 46.0x0.75	47.5 mm	40.8 mm	9.2 mm
M 49.0x0.75	50.5 mm	43.8 mm	9.2 mm
M 52.0x0.75	53.5 mm	46.8 mm	9.2 mm
M 55.0x0.75	56.5 mm	49.8 mm	9.2 mm
M 58.0x0.75	59.5 mm	52.8 mm	9.2 mm
M 62.0x0.75	63.5 mm	56.8 mm	9.2 mm
M 67.0x0.75	68.5 mm	61.8 mm	9.2 mm



## Headquarters Europe

### Jos. Schneider Optische Werke GmbH

Ringstraße 132  
55543 Bad Kreuznach  
+49 671 601 205  
isales@schneiderkreuznach.com  
www.schneiderkreuznach.com

## Offices Worldwide

### America

+1 800 645 7239 (East Coast)  
+1 800 228 1254 (West Coast)  
info@schneideroptics.com

### Asia

+86 755 8832 1170  
info@schneider-asiapacific.com