

Mechanical-pneumatic control valve

Type PVM 032

Technical data

Function principle	mechanical-pneumatic control valve
Pressure:	8 bar
Operating medium	filtered compressed air
Sensor stroke range	0 ... ±2mm
Zero adjustment range	-1 mm ... +25 mm
Middle sensor force	13 N
Zero adjustment force	10N 120N
Flow range	100 l/min
Operating medium	filtered compressed air

The mechanical-pneumatic control valve is a simple solution for a table position control.

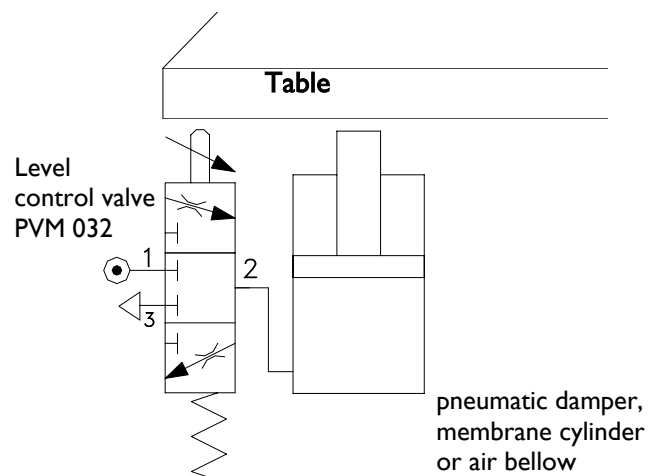


Applications

- Level control
- Damping
- Vibration isolation
- Reduction of vibration

Function principle

The level is constantly scanned by a pin which is connected to the pneumatic spool valve. Depending on the spool valve position, pressure is either applied into the air spring or vented from the inside of the air spring. The table level can be maintained to accuracy to $\pm 1/100$ mm.



Principally three control valves are used for one table; one corner of the table is fixed.

The incoming air supply is conditioned with a pressure regulator to limit system pressure to a maximum of 8 bar, water trap to remove vapour and an air filter to remove dust and any foreign bodies from the air supply.

Dimensions

Diameter	70 mm
High	70 mm
Mounting	via through holes 2 x 5,3 mm
Connection	plug in connector for plastic tube 6 mm



Specification subject to change without notice! All rights reserved

Jos. Schneider Optische Werke GmbH • Ringstr.132 • D 55543 Bad Kreuznach • Germany • business division Servohydraulik
 Fon ++49 (0)671-601-278 • Fax ++49 (0)671-601-327 • hydraulik@SchneiderKreuznach.com • www.schneiderkreuznach.com