

Apo-Xenoplan 2.8/16

Compact C-Mount anti-shading lenses for up to 12 megapixel 1.3" sensor with micro-lens on the pixel. This 16 mm focal length lens covers an image circle of 24 mm, which enables to achieve a large field of view at a short working distance.

The lockable focus and iris setting, a robust housing and the 400 nm to 1000 nm broadband AR coating makes this lens ideal for measurement applications in factory automation.

The series of anti-shading lenses for 1.3" sensor is completed with lenses of 20 mm, 24 mm, 35 mm and 50 mm focal length.



Apo-Xenoplan 2.8/16

Key features

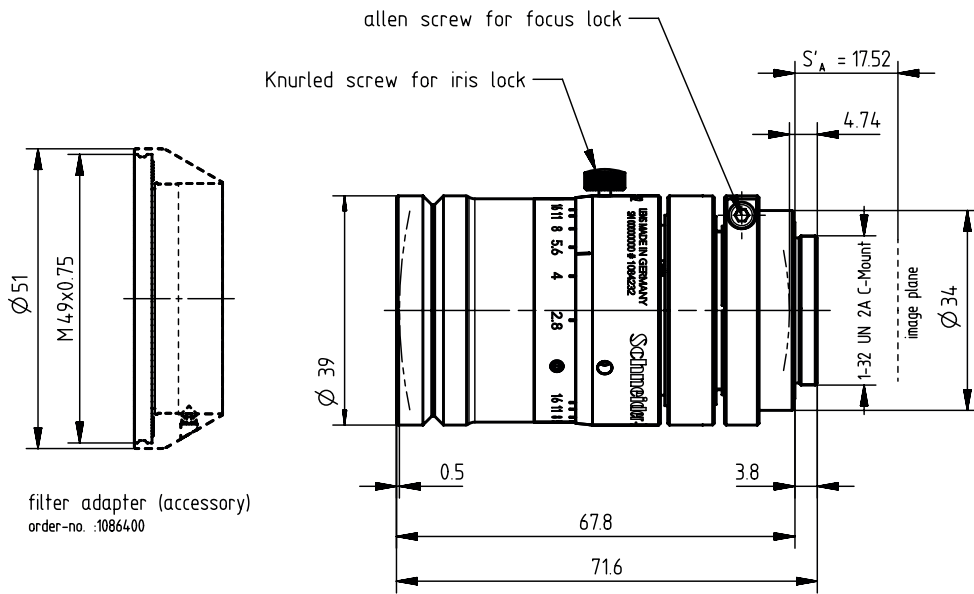
- Anti-shading lens for up to 1.3" 12 megapixel sensor with micro-lenses
- Covers 24 mm image circle
- 400 - 1000 nm broadband AR coating
- Focus and iris setting lockable

Applications

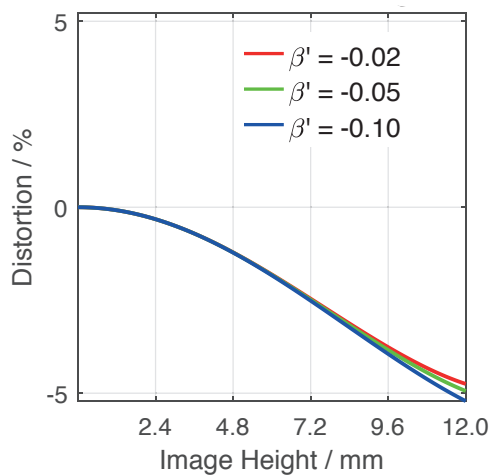
- 3D measurement
- 2D measurement
- Metrology

Name	Apo-Xenoplan 2.8/16
Type	-0002
Focal Length [mm]	16
Magnification	-0.1
Image circle [mm]	24
Resolution [μm]	3.65
F/# range	2.8 ... 16
NA	0.18
Interface	C-Mount
Working distance [mm]	152
AoV [°]	72
Focus control	manual
Transmission [nm]	400 - 1000
Filter thread [mm]	M49 x 0.75 with adapter
Dimensions L x D [mm]	71.6 x 39.0

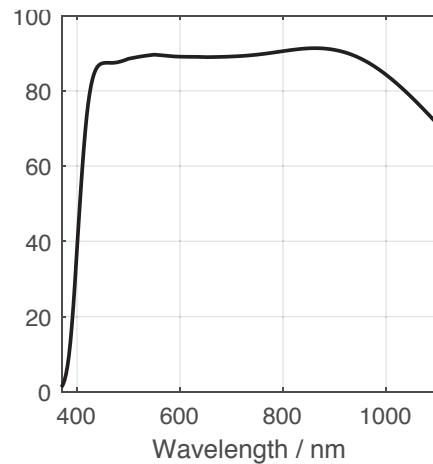
Name	Apo-Xenoplan 2.8/16
Weight [g]	204
Storage temperature [°C]	-25 ... +70
f'_{eff} [mm]	16.37
S_F [mm]	13.14
$S'_{F'}$ [mm]	17.93
HH' [mm]	38.42
β'_P	3.427
S_{EP} [mm]	17.92
S'_{AP} [mm]	-38.16
Σd [mm]	66.36
ID	1084232



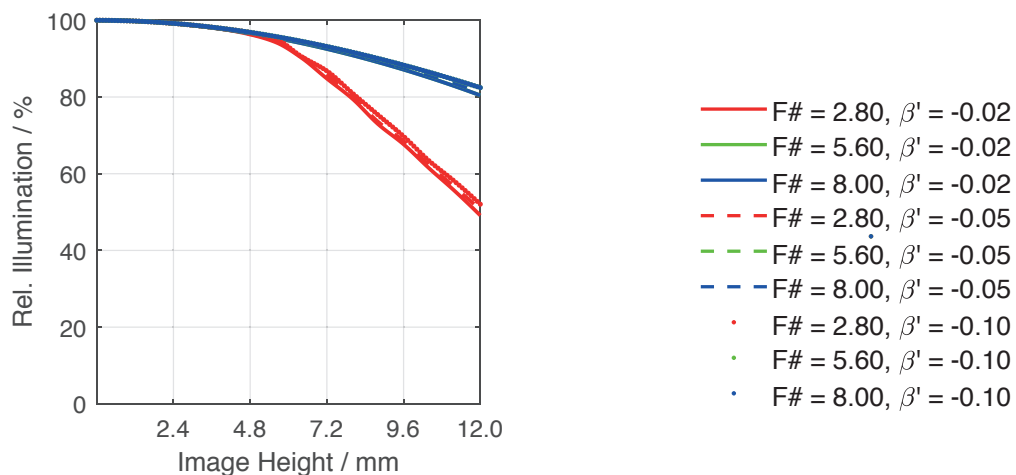
Distortion vs. Image Height



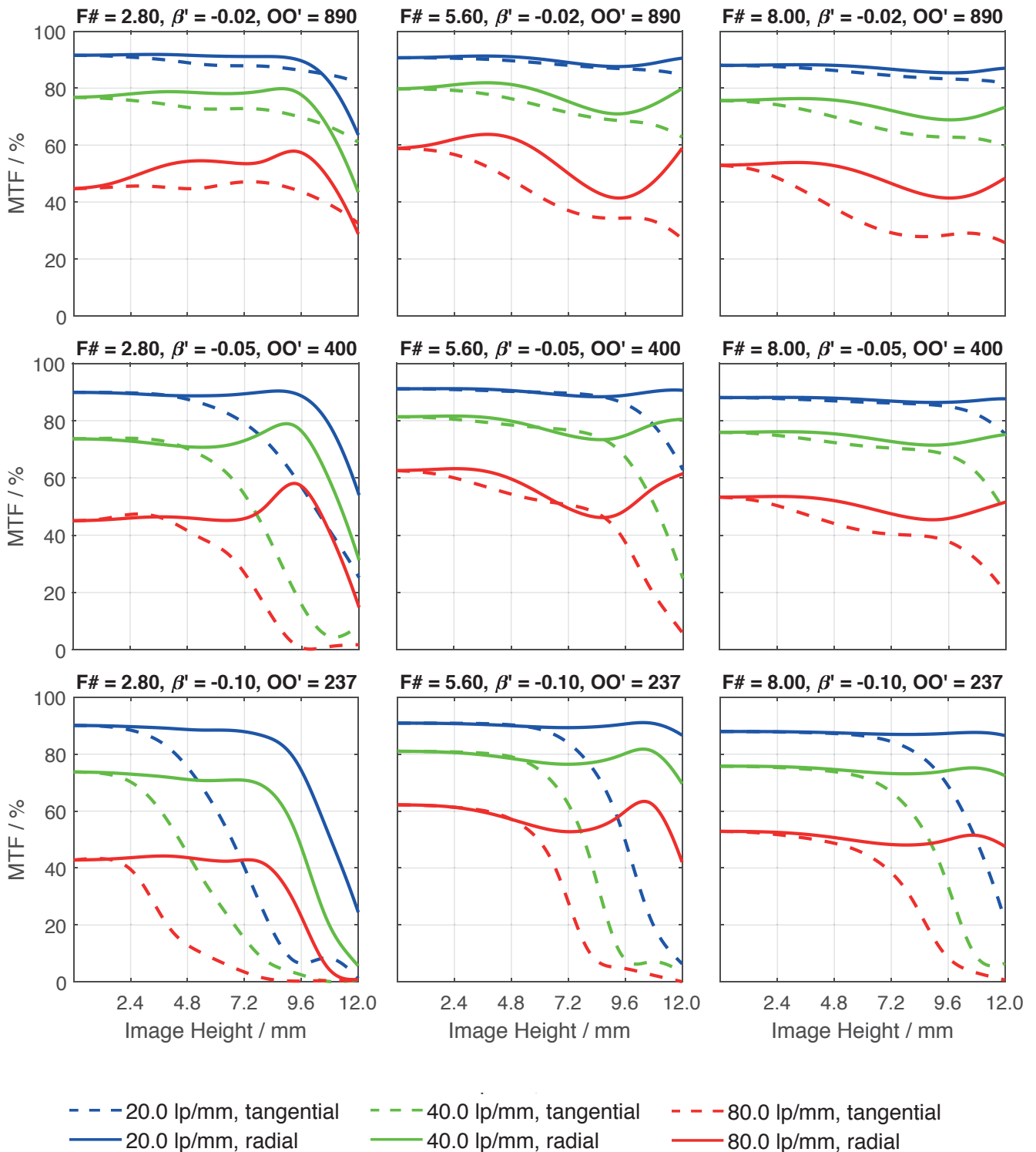
Transmittance vs. Wavelength



Relative Illumination vs. Image Height



Spectrum Name	VIS					
Wavelengths [nm]	425	475	525	575	625	675
Weights	8	16	23	22	19	13



Accessories	Mount	Length	ID
Adapter	CS-Mount Adapter	5 mm	25081
	C-Mount / M42 x 1 Adapter	-	1075817
Ext. Tube	C-Mount	5 mm	39316
	C-Mount	8 mm	39315
	C-Mount	10 mm	39312
Filter Holder	M49 x 0.75	-	1086400

Get more information

Contact our local offices



Headquarter Germany

Jos. Schneider Optische Werke GmbH
Ringstraße 132
55543 Bad Kreuznach
☎ +49 671 601 205
✉ cs@schneiderkreuznach.com
www.schneiderkreuznach.com

Offices Worldwide

China

☎ +86 755 8832 1170
✉ shawn.liu@schneider-asiapacific.com

North America

☎ +1 800 645 7239 (East Coast)
☎ +1 800 228 1254 (West Coast)
✉ info@schneideroptics.com

Singapore

☎ +65 9488 0062
✉ thongv@schneiderkreuznach.com